

# NEXT STEPS

college park church

# COLLEGE PARK CHURCH // North Indy

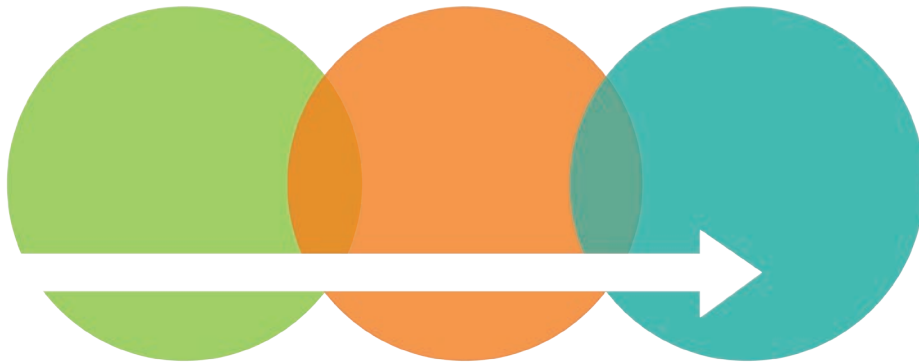


# OUR MISSION

At College Park Church, we exist to ignite a passion to follow Jesus. As we live on mission as passionate followers of Jesus, we want to be used by God to help others become passionate followers of Jesus.

# OUR STRATEGY

So how do we accomplish our mission? As a follower of Jesus at College Park, we want you to **Belong**, **Grow**, and **Multiply**.



# WHAT WE MEAN BY **BELONG**

You shouldn't walk alone.

The Bible is clear—we're meant to do life together with other believers. When we say we want people to belong, we mean that we want them to:

*Belong to College Park in covenant membership*

*Belong to a group where they can know others, be known by others, serve, and live out our mission together*

When we walk alongside other believers, we become part of something bigger than ourselves—we belong to a people.



# GROW

Growth is healthy.

Growth is important for the health of your relationship with Jesus. Whether you're new to following Jesus, or have been following Him for years, we are all called to grow in Christlikeness. When we say we want people to grow, we mean that we want them to grow in their:

*Knowledge of God and His Word*

*Character & pursuit of Christlikeness*

*Ability to use the Word in their own life and in the lives of others*

At College Park, this happens through classes, groups, discipleship, and serving.

# MULTIPLY

We're on mission.

Igniting a passion to follow Jesus requires action! To be on mission means that we are actively taking part in making disciples. There are many ways to multiply:

*Raising up the next generation of Christ-followers by discipling children*

*Sharing the gospel near and far*

*Being part of a discipleship relationship*

*Serving at College Park or through our ministry partners*

*Helping launch a new campus, church plant, or taking the gospel to the world*

These are just a few ways you can multiply your life in the lives of others—the possibilities are endless.


We're serious about igniting a passion to follow Jesus. We believe that our strategy helps us accomplish this both in our city and even to the ends of the earth.

# HOW TO USE THIS NEXT STEPS GUIDE

This guide is designed to help you take a next step regardless of how long you've been at College Park, or how long you've been following Jesus. Whether it's going to a Newcomer Night, becoming a member, joining a Small Group, or finding a place to serve and use your gifts, we want to help you take your walk with Jesus to a deeper level.

We've organized this booklet around our strategy: **Belong**, **Grow**, and **Multiply**. We'd love for you to think about taking a step in each of these areas, as we believe that all three areas are vital to your spiritual growth and maturity.

Use the Table of Contents to help you navigate the various opportunities, and don't hesitate to reach out to the listed contact person for events, or visit us online at [yourchurch.com](http://yourchurch.com) if you have any questions.

*If registration is required for an event listed in the following pages, the following symbol will appear next to the description: *



## TABLE OF CONTENTS

# NEXT STEPS

### BELONG

Newcomer Night .....	11
Membership Class .....	11
Small Groups .....	12
Adult Big Groups .....	13

### GROW

NEW BELIEVERS CLASSES	The Gospel Explained .....	17
	Fundamentals of Christianity .....	17
	Foundations for Living the Christian Faith .....	18
	How to Study the Bible .....	18
BIBLE STUDIES	Men's Bible Studies .....	19
	Women's Bible Studies .....	19
NEXT GENERATION	Children's Ministries .....	20
	Student Ministries .....	26
CLASSES	How to Share the Gospel .....	28
	Basics of Discipleship .....	28
	Helping Others Grow .....	29
	Common Counseling Issues .....	29
	Theology of Biblical Counseling .....	29
	Biblical Decision-Making .....	30
	Doctrine of God, Scripture, & Man .....	30
	Doctrine of Christ, the Holy Spirit, & Salvation .....	30
	Doctrine of the Church & Eschatology .....	31
	Strengthening Your Marriage .....	31
	Parenting for Life .....	31
	Pre-Marital Counseling .....	32
	Baptism Orientation for Parents .....	32
	God Owns It All .....	33
Biblical Counseling Training Weekends .....	33	
GROUPS	Mom's Connection .....	34
	Titus 2 Women .....	34



## GROW

EVENTS	Worship-Based Prayer Nights . . . . .	36
	Journey in Mission (JIM) Night . . . . .	36
	THINK 18 . . . . .	37
	Marriage Dessert Night . . . . .	37
	Foundations in Parenting Seminar . . . . .	38

TRINITY EXTENSION CAMPUS . . . . .	39
------------------------------------	----

DIGITAL	Theology Basics Video Series . . . . .	39
RESOURCES	Discipleship Resources . . . . .	39
	Family Resources . . . . .	39
	Small Group Resources . . . . .	39

## MULTIPLY

EVENTS	REACH  17 . . . . .	41
	Vision Trips . . . . .	41
	First Friday Prayer . . . . .	41
	Titus 2 Women . . . . .	42
	Women Next Door . . . . .	42
	Women's Summer Gathering . . . . .	43
	Women's Blessings Market . . . . .	43

SERVE	Discipling the Next Generation . . . . .	44
	Serve & Use Your Gifts . . . . .	44
	Be a Small Group Leader . . . . .	44

LOCAL OUTREACH . . . . .	45
--------------------------	----

COMPASSION	Legacy Builders . . . . .	46
	Deaf Church . . . . .	46
	Adult Special Needs . . . . .	47
	Widows . . . . .	47

WORSHIP ARTS	Choir . . . . .	48
	Children's Choir . . . . .	48
	Dance . . . . .	48
	Orchestra . . . . .	49
	Praise Band . . . . .	49
	Tech Serve . . . . .	49

MAP . . . . .	50
---------------	----



# BELONG

The Bible is clear—we're meant to do life together with other believers. When we say we want people to belong, we mean that we want them to:

*Belong to College Park in covenant membership*

*Belong to a group where they can know others, be known by others, serve, and live out our mission together*

When we walk alongside other believers, we become part of something bigger than ourselves—we belong to a people.

# BELONG

## NEWCOMER NIGHT

Newcomer Night is a great way to learn about who we are and what we believe at College Park. You'll meet others who are new to the church, as well as staff and current members. Share a meal and ask questions to find out how to take your next step.

**WHEN** Third Friday of each month | 6:30 - 8:30 p.m.

**WHERE** Host home

**QUESTIONS?** Jenny Brake | [jbrake@yourchurch.com](mailto:jbrake@yourchurch.com)

**LEARN MORE** [yourchurch.com/connect](http://yourchurch.com/connect)

## MEMBERSHIP CLASS

Learn more about our mission, strategy, core values, and ministries. Whether you intend to join College Park or just want to learn more about the church, this class is the best way to discover what it means to belong at College Park Church.

**WHEN** *Saturday Intensives*

2017: Nov. 4 | 9 a.m. - 1 p.m. (includes lunch)

2018: Feb. 3, Apr. 28, July 28, Nov. 3 | 9 a.m. - 1 p.m. (includes lunch)

**WHERE** East Room A/B

**WHEN** *Four-Week Sunday Series*

2017: Sundays from Sept. 24 - Oct. 15 | 9:45 a.m.

2018: Sundays from Mar. 4 - Mar. 25 | 9:45 a.m.

**WHERE** Room O|101

**QUESTIONS?** Michelle Lawrence | [mlawrence@yourchurch.com](mailto:mlawrence@yourchurch.com)

**LEARN MORE** [yourchurch.com/membership](http://yourchurch.com/membership)

# BELONG

## SMALL GROUPS

College Park Small Groups meet all over the city and on every day of the week. With more than 125 groups, every group is unique. Our three “Small Group Essentials” are the defining characteristics that identify and connect all of our Small Groups to one another and ensure that groups function biblically and effectively.

*Christ-centered & focused on the Word*

*Intentionally invasive*

*Living life together*

**LEARN MORE** [yourchurch.com/smallgroups](http://yourchurch.com/smallgroups)

## HOW TO JOIN A SMALL GROUP

When you're ready to join a Small Group, visit our Small Group Finder tool online. This tool allows you to see open Small Groups by geographic location. You can filter results based on day of the week that the group meets as well as the time of day that they meet. The search will provide you with the Small Group leader's contact information so you can reach out and plan a visit.

**QUESTIONS?** Karesse Faull | [kfaull@yourchurch.com](mailto:kfaull@yourchurch.com)

**LEARN MORE** [yourchurch.com/smallgroupfinder](http://yourchurch.com/smallgroupfinder)

# BELONG

## ADULT BIG GROUPS

These community-oriented adult Bible classes allow you to engage with God's Word in a smaller group of people on Sunday mornings. Each Adult Big Group is as diverse as the people in it, so we recommend visiting several to get a feel for the structure that fits you best. Visit any time and try a few before making a final decision. Topics are subject to change.

**LEARN MORE** [yourchurch.com/biggroups](http://yourchurch.com/biggroups)

### YOUNG ADULTS

This class seeks to help young, single adults and couples grow in their affection for Christ, in their obedience to Him, and in their service to others. The class meets as a large group for teaching and then interacts in discussion in smaller groups.

**WHEN** Sundays | 8 a.m.

**WHERE** Chapel C

### BIBLE STUDY **TAUGHT BY ROB LOY**

This group is teacher-directed with a time of fellowship at the beginning of the class and is open to all ages. There are also opportunities to connect outside of class.

**WHEN** Sundays | 9:45 a.m.

**WHERE** Room E|106

## **BE ONE** TAUGHT BY JIM MILLIGAN & TODD RUETZ

This group studies books of the Bible moving from the Old Testament to the New Testament, and is open to all ages.

**WHEN** Sundays | 9:45 a.m.

**WHERE** Chapel B

## **ELEUTHEROS** TAUGHT BY DAVID HOFFEDITZ

This group studies books of the Bible as well as other books, and is open to all ages. There are a number of community activities for men, women, and families.

**WHEN** Sundays | 9:45 a.m.

**WHERE** East Room A/B

## **KOINONIA** TAUGHT BY JOE BARTEMUS

This group generally goes through a book of the Bible and is set up for the teacher to review the text and offer application questions from the passage. This group is open to all ages.

**WHEN** Sundays | 9:45 a.m.

**WHERE** Room E|104

## **NEW WORLD** TAUGHT BY JIM WILLIAMS

The first 45 minutes of this group meeting is in a large group, with discussion-style Bible teaching, followed by Small Group interactions. These Small Groups often have activities outside of Sunday morning and pray for one another throughout the week. This group is for young adults, including singles, and couples.

**WHEN** Sundays | 9:45 a.m.

**WHERE** Chapel A

## POST-NUPTIALS TAUGHT BY BOB & KAREN POURCHO

Tailored to meet the needs of young marrieds and young families, this group will encourage you to grow deeper in your faith, build relationships, and live with purpose. Ongoing topics alternate between marriage studies, topical issues, and books of the Bible. This group is geared toward young couples and families.

**WHEN** Sundays | 9:45 a.m.

**WHERE** Room E|110

## TRUTH SEEKERS TAUGHT BY PHIL FRYE

This group studies Bible passages and topics and applies them to the needs of the people through teaching and discussion. This group is open to all ages.

**WHEN** Sundays | 11:30 a.m.

**WHERE** Room E|104



# GROW

Growth is important for the health of your relationship with Jesus. Whether you're new to following Jesus or have been following Him for years, we are all called to grow in Christlikeness. When we say we want people to grow, we mean that we want them to grow in their:

*Knowledge of God and His Word*

*Character and pursuit of Christlikeness*

*Ability to use the Word in their own life and in the lives of others*

At College Park this happens through classes, groups, discipleship, and serving.



# GROW

## NEW BELIEVERS

### THE GOSPEL EXPLAINED CLASS R

This four-week class will walk new believers and those exploring Christianity through the message of the Bible.

**WHEN** 2017: Sundays from Sept. 17 - Oct. 8 | 9:45 a.m. (fall)  
2018: Sundays from Jan. 7 - Jan. 28 | 9:45 a.m. (winter)

**WHERE** Chapel C

**QUESTIONS?** Kelly Alexander | [kalexander@yourchurch.com](mailto:kalexander@yourchurch.com)

**LEARN MORE & REGISTER** [yourchurch.com/gospelexplainedfall](http://yourchurch.com/gospelexplainedfall)  
[yourchurch.com/gospelexplainedwinter](http://yourchurch.com/gospelexplainedwinter)

### FUNDAMENTALS OF CHRISTIANITY CLASS R

This class will look at the foundational truths of Christianity using the Gospel of Mark.

**WHEN** 2017: Sundays from Oct. 15 - Nov. 5 | 9:45 a.m. (fall)  
2018: Sundays from Feb. 4 - Feb. 25 | 9:45 a.m. (winter)

**WHERE** Chapel C

**QUESTIONS?** Kelly Alexander | [kalexander@yourchurch.com](mailto:kalexander@yourchurch.com)

**LEARN MORE & REGISTER** [yourchurch.com/fundamentalsfall](http://yourchurch.com/fundamentalsfall)  
[yourchurch.com/fundamentalswinter](http://yourchurch.com/fundamentalswinter)

## FOUNDATIONS FOR LIVING THE CHRISTIAN FAITH CLASS R

The goal of this class is to provide a Biblical understanding of why we should meet with God on a daily basis and practical tools to equip you for doing just that.

**WHEN** 2017: Sundays from Nov. 12 - Dec. 3 | 9:45 a.m. (fall)  
2018: Sundays from Mar. 4 - Mar. 25 | 9:45 a.m. (spring)

**WHERE** Chapel C

**QUESTIONS?** Kelly Alexander | [kalexander@yourchurch.com](mailto:kalexander@yourchurch.com)

**LEARN MORE & REGISTER** [yourchurch.com/foundationsfall](http://yourchurch.com/foundationsfall)  
[yourchurch.com/foundationsspring](http://yourchurch.com/foundationsspring)

## HOW TO STUDY THE BIBLE CLASS R

This class will teach you how to study, understand, and apply God's Word to your life. You'll learn about the importance of studying God's Word, how to understand context, make observations and interpretations, and what it means to apply, and obey the Bible.

**WHEN** 2018: Sundays from Jan. 21 - Feb. 11 | 9:45 a.m.

**WHERE** Room E|101

**QUESTIONS?** Kelly Alexander | [kalexander@yourchurch.com](mailto:kalexander@yourchurch.com)

**LEARN MORE & REGISTER** [yourchurch.com/studyingthebible](http://yourchurch.com/studyingthebible)

# GROW

## BIBLE STUDIES

### MEN'S BIBLE STUDIES R

The goal of men's Bible studies is for men to grow together in Christ as they work together to apply God's Word to their lives. Each study is unique, but all are centered on studying and applying God's Word in the context of community. There are men's Bible studies that meet on Wednesday evenings, Thursday mornings, and Friday mornings.

**QUESTIONS?** Paul Nystedt | [pnystedt@yourchurch.com](mailto:pnystedt@yourchurch.com)

**LEARN MORE** [yourchurch.com/mensbiblestudies](http://yourchurch.com/mensbiblestudies)

### WOMEN'S BIBLE STUDIES R

There are several women's studies offered each semester to help you grow in your knowledge of God's Word as you connect with other women. Studies meet on Tuesday mornings and Wednesday evenings, and child care is available for most studies. Visit the website to see a list of each semester's studies.

**WHEN**      **FALL** | Tuesday & Wednesday mornings & evenings | Sept. - Nov.

**LATE WINTER** | Tuesday & Wednesday mornings & evenings | Jan. - Mar.

**SPRING** | Tuesday mornings & Wednesday evenings | May - June

**QUESTIONS?** Jane Schuth | [jschuth@yourchurch.com](mailto:jschuth@yourchurch.com)

**LEARN MORE** [yourchurch.com/womensbiblestudies](http://yourchurch.com/womensbiblestudies)

# GROW

## NEXT GENERATION // CHILDREN

### SUNDAY SCHOOL

We are serious about our responsibility, in partnership with parents, to instruct children in “the whole counsel of God.” Each grade level focuses on a specific theme, but all of the classes together are part of a single discipleship strategy aimed at giving children a comprehensive biblical foundation that we pray will give them a firm place to stand as they grow and mature.

**WHEN** Sunday mornings

**WHERE** When you check in your children at The Park, Children’s Ministries team members will help guide you to the correct room for your child(ren).

**QUESTIONS?** Hannah Booher | [hbooher@yourchurch.com](mailto:hbooher@yourchurch.com)

**LEARN MORE** [yourchurch.com/children](http://yourchurch.com/children)

### NURSERY

Our goal in the nursery is to help develop a “God-awareness” for children. We incorporate specific topics into our prayers for each child and emphasize a limited number of simple Bible truths.

**WHEN** 8 a.m., 9:45 a.m., 11:30 a.m.

### PRESCHOOL

During the preschool years, our goal is to introduce children to more than two hundred Bible stories in chronological order, highlighting key themes that will be developed more fully in the elementary years.

**WHEN** 8 a.m., 9:45 a.m., 11:30 a.m.

## **KINDERGARTEN** | JESUS, WHAT A SAVIOR: A STUDY FOR CHILDREN ON REDEMPTION

This chronological study of redemption explores the incomparable greatness and worth of God, the desperate condition of helpless sinners, and the all-sufficient work of Jesus Christ to redeem sinful people. In it, we present the three ways God reveals Himself to man—through His Son, through creation, and through His Word.

**TEACHERS** Jennifer Pettersen & Sarah Vroegop

**WHEN** 9:45 a.m.

## **FIRST GRADE** | THE ABCs OF GOD: A STUDY FOR CHILDREN ON THE GREATNESS & WORTH OF GOD

This study answers the questions, “Who is God?” and “What is God like?” using the framework of the alphabet to introduce God’s attributes and divine character.

**TEACHERS** Patti Warner & Teresa Barthuly

**WHEN** 9:45 a.m.

## **SECOND GRADE** | FAITHFUL TO ALL HIS PROMISES: A STUDY FOR CHILDREN ON THE PROMISES OF GOD

Building on the foundation of trust in the character of God, which children learn in first grade, second grade emphasizes the reliability of the promises of God while helping children learn to stand on those promises.

**TEACHERS** JoAnn Dinsmore & Kate Britton

**WHEN** 9:45 a.m.

## THIRD GRADE | IN THE BEGINNING... JESUS: A CHRONOLOGICAL STUDY FOR CHILDREN ON REDEMPTIVE HISTORY

In this study, children learn that the purpose of the Old Testament is to point to Christ as the promised Messiah. Children see how Jesus and His perfect work in redeeming sinners was God's plan for all eternity past.

**TEACHERS** Lindsay & Chris Atkinson

**WHEN** 9:45 a.m.

## FOURTH GRADE | TO BE LIKE JESUS: A STUDY FOR CHILDREN ON FOLLOWING JESUS

Building on what the children learned in the previous year, this study focuses on what it means to follow Jesus. It explores the elements of salvation and progresses to an emphasis on the meaning of sanctification.

**TEACHERS** Ty Storrs, Tim Culp, & Brian Tague

**WHEN** 9:45 a.m.

## FIFTH GRADE | HOW MAJESTIC IS YOUR NAME: A STUDY FOR CHILDREN ON THE NAMES AND CHARACTER OF GOD

This study of the character of God uses the framework of His names with an emphasis on our response to God. This study also returns to the questions, “Who is God?” and, “What is God like?” There is a particular emphasis on the implications of God’s character as it relates to personal application.

**TEACHERS** Jim Walls & Bob Markette

**WHEN** 9:45 a.m.

## SIXTH GRADE | MY PURPOSE WILL STAND: A STUDY ON THE PROVIDENCE OF GOD

This study of the providence of God leans on knowledge children have learned in earlier grades and sets it in the framework of the bigger purposes of God. Children are led to see all the acts of God as part of His eternal plan. This study reinforces God-centered answers to the difficult questions of life and emphasizes the right of God, the power of God, and the wisdom of God to rule the world.

**TEACHERS** John Benjamin & Tracy Brown

**WHEN** 9:45 a.m.

## AWANA

The goal of AWANA is to teach children who Jesus is, to help them to learn the Word of God, and to train them to apply the Bible's teachings to their lives. We want to partner with parents in training children to know, love, and serve God.

**WHEN** Wednesdays | 6:15 - 8:15 p.m.

**WHERE** When you check in your children at The Park, Children's Ministries team members will help guide you to the correct room for your child(ren).

**QUESTIONS?** Kristin Gilbert | [kgilbert@yourchurch.com](mailto:kgilbert@yourchurch.com)

**LEARN MORE** [yourchurch.com/awana](http://yourchurch.com/awana)

## KINDERGARTEN, GRADES 1 & 2

### STAND IN AWE: A STUDY FOR CHILDREN ON THE BIBLE

This study presents the three ways God reveals Himself to man in order to be seen and known—through His Son, through His creation, and through His Word. Children learn about the characteristics of the Bible, the main message of the Bible (redemption), and the purpose of the Bible (that we may believe.)

## GRADES 3 - 6

### FIGHT THE GOOD FIGHT: A STUDY FOR CHILDREN ON PERSEVERING IN FAITH

In this study, students discover that everyone is in a battle—either as an unbeliever fighting against God, or as a believer fighting the fight of faith with God's help. The first five lessons present the message of salvation, and students are encouraged to look at their own heart condition. They are taught that every battle is a spiritual battle as the heart battlegrounds are exposed. The enemy's tactics are revealed, and the student is instructed in a battle strategy that leads to victory in Jesus.





# GROW

## NEXT GENERATION // STUDENTS

### STUDENT MINISTRIES

Our goal is to come alongside students as they explore what it looks like to ignite a passion to follow Jesus in their unique context. We want to help develop a vibrant community among students at College Park as they grow and mature in their faith.

**QUESTIONS?** Natalie Eberhard | [neberhard@yourchurch.com](mailto:neberhard@yourchurch.com)

**LEARN MORE** [yourchurch.com/students](http://yourchurch.com/students)

### JUNIOR HIGH (7<sup>TH</sup> & 8<sup>TH</sup> GRADE)

#### SUNDAYS

Jr. High students meet together as a large group and our goal is to help them develop into men and women of God through culturally relevant teaching, engaging peer-led worship, facilitated interactions with each other, and break-out discussion groups. This year, Jr. High students will walk through *Rejoicing in God's Good Design: A Study for Students on Biblical Manhood and Womanhood*.

**WHEN** 9:45 a.m.

**WHERE** Jr. High Room

#### WEDNESDAYS

Jr. High students meet together in Small Groups where they discuss the Bible, life, relevant topics, and spend time in prayer together, led by an adult Small Group leader. Each Small Group covers different material over the course of the year based on the specific needs of the group.

**WHEN** 6:30 - 8 p.m.

**WHERE** Jr. High Room

## SENIOR HIGH (9<sup>TH</sup> - 12<sup>TH</sup> GRADES)

### SUNDAYS

Sr. High students meet in Small Groups at host homes to discuss the Bible, life, relevant topics, and spend time in prayer together, led by an adult Small Group leader. Having groups meet in homes helps create an additional layer of connection and interaction among students. Each Small Group covers different material over the course of the year based on the specific needs of the group.

**WHEN** 6 - 7:30 p.m.

**WHERE** Host homes

### WEDNESDAYS

Sr. High students meet as a large group and our goal is to help them develop into men and women of God through culturally relevant teaching and engaging worship through song and prayer. We want student interactions to be encouraging from the moment they enter the building to the time they leave. In the fall, students will explore the meaning of gospel community, followed by a study of 1 John to understand how gospel community impacts their love for Jesus and the world.

**WHEN** 6:30 - 8 p.m.

**WHERE** College Park Ministry Center

# GROW

## CLASSES

### HOW TO SHARE THE GOSPEL CLASS R

This class is designed to help you share the gospel effectively in the context of your daily conversations and relationships.

**WHEN** 2017: Sundays from Sept. 10 - Oct. 1 | 11:30 a.m. (fall)  
2018: Sundays from Jan. 7 - 28 | 11:30 a.m. (winter)

**WHERE** Chapel C

**QUESTIONS?** Joe Wittmer | [jwittmer@yourchurch.com](mailto:jwittmer@yourchurch.com)

**LEARN MORE & REGISTER** [yourchurch.com/evangelismfall](http://yourchurch.com/evangelismfall)  
[yourchurch.com/evangelismwinter](http://yourchurch.com/evangelismwinter)

### BASICS OF DISCIPLESHIP CLASS R

This class will examine God's Word to help you understand what discipleship is and how you, as a follower of Jesus Christ, can help others grow and multiply.

**WHEN** 2017: Sundays from Oct. 8 - 29 | 11:30 a.m. (fall)  
2018: Sundays from Jan. 1 - 28 | 11:30 a.m. (winter)

**WHERE** Chapel A

**QUESTIONS?** Kelly Alexander | [kalexander@yourchurch.com](mailto:kalexander@yourchurch.com)

**LEARN MORE & REGISTER** [yourchurch.com/basicsfall](http://yourchurch.com/basicsfall)  
[yourchurch.com/basicswinter](http://yourchurch.com/basicswinter)

## HELPING OTHERS GROW CLASS R

This class is designed to equip you with the skills necessary to accurately handle the Word of God in your own life and in the lives of others. You will be trained on how to discern problems, gather data, build involvement, assign homework, and give hope. These are the essential components of Biblical Counseling.

**WHEN** 2017: Sundays from Nov. 5 - 26 | 11:30 a.m. (fall)  
2018: Sundays from Mar. 4 - 25 | 11:30 a.m. (spring)

**WHERE** Chapel A

**QUESTIONS?** Kelly Alexander | [kalexander@yourchurch.com](mailto:kalexander@yourchurch.com)

**LEARN MORE & REGISTER** [yourchurch.com/helpingfall](http://yourchurch.com/helpingfall)  
[yourchurch.com/helpingspring](http://yourchurch.com/helpingspring)

## COMMON COUNSELING ISSUES CLASS R

This class builds on the “Helping Others Grow” class content, and will equip you to counsel people as they navigate guilt and the past, anger, trials & suffering, depression, and fear and forgiveness.

**WHEN** 2017: Wednesdays from Sept. 6 - Oct. 25 | 6:15 - 8 p.m.

**WHERE** Room B|5-6

**QUESTIONS?** Kelly Alexander | [kalexander@yourchurch.com](mailto:kalexander@yourchurch.com)

**LEARN MORE & REGISTER** [yourchurch.com/commonissues](http://yourchurch.com/commonissues)

## THEOLOGY OF BIBLICAL COUNSELING CLASS R

No one makes a decision, has a thought, or expresses an opinion that isn't informed by theology. What you think about God and His Word informs how you perceive the events around you, your relationships, and even your emotions. This class is designed to uncover how theology shapes your life and then point you toward a better, more accurate, God-honoring view of life.

**WHEN** 2018: Wednesdays from Jan. 24 - Mar. 28 | 6:15 - 8 p.m.

**WHERE** Room B|5-6

**QUESTIONS?** Kelly Alexander | [kalexander@yourchurch.com](mailto:kalexander@yourchurch.com)

**LEARN MORE & REGISTER** [yourchurch.com/counselingtheology](http://yourchurch.com/counselingtheology)

## BIBLICAL DECISION-MAKING CLASS R

This four-week class will explore how to make decisions from a biblical perspective in light of a desire to follow God's Word. We'll see how this desire affects decisions like what job to take, where to move, the person you date or marry, the friends you choose, and how you spend your free time.

**WHEN** 2018: Sundays from Feb. 25 - Mar. 18 | 9:45 a.m.

**WHERE** Room E|101

**QUESTIONS?** Kelly Alexander | [kalexander@yourchurch.com](mailto:kalexander@yourchurch.com)

**LEARN MORE & REGISTER** [yourchurch.com/decisionmaking](http://yourchurch.com/decisionmaking)

## DOCTRINE OF GOD, SCRIPTURE, & MAN CLASS R

In this series of three systematic theology classes, you'll learn about doctrines that are central to the Christian faith. The classes will study Scripture to understand the doctrines, and then discuss how these truths affect life and how to share them with others.

**WHEN** 2018: Wednesdays from Sept. 6 - Oct. 18 | 6:30 - 8 p.m.

**WHERE** Room B|1-3

**QUESTIONS?** Kelly Alexander | [kalexander@yourchurch.com](mailto:kalexander@yourchurch.com)

**LEARN MORE & REGISTER** [yourchurch.com/doctrine1](http://yourchurch.com/doctrine1)

## DOCTRINE OF CHRIST, THE HOLY SPIRIT, & SALVATION CLASS R

In this series of three systematic theology classes, you'll learn about doctrines that are central to the Christian faith. The classes will study Scripture to understand the doctrines, and then discuss how these truths affect life and how to share them with others.

**WHEN** 2018: Wednesdays from Jan. 10 - Feb. 14 | 6:30 - 8 p.m.

**WHERE** Room B|1-3

**QUESTIONS?** Kelly Alexander | [kalexander@yourchurch.com](mailto:kalexander@yourchurch.com)

**LEARN MORE & REGISTER** [yourchurch.com/doctrine2](http://yourchurch.com/doctrine2)

## DOCTRINE OF THE CHURCH & ESCHATOLOGY CLASS R

In this series of three systematic theology classes, you'll learn about doctrines that are central to the Christian faith. The classes will study Scripture to understand the doctrines, and then discuss how these truths affect life and how to share them with others.

**WHEN** 2018: Wednesdays from Mar. 7 - Apr. 18 | 6:30 - 8 p.m.

**WHERE** Room B|1-3

**QUESTIONS?** Kelly Alexander | [kalexander@yourchurch.com](mailto:kalexander@yourchurch.com)

**LEARN MORE & REGISTER** [yourchurch.com/doctrine3](http://yourchurch.com/doctrine3)

## STRENGTHENING YOUR MARRIAGE CLASS R

This class is designed for both newly married couples and couples who want a refresher on the biblical purpose of marriage. Topics include the role of the husband, the role of the wife, biblical sexuality, and how to improve communication.

**WHEN** 2017: Sundays from Sept. 10 - Oct. 22 | 8 a.m.

**WHERE** East Room

**QUESTIONS?** Kelly Alexander | [kalexander@yourchurch.com](mailto:kalexander@yourchurch.com)

**LEARN MORE & REGISTER** [yourchurch.com/strongmarriages](http://yourchurch.com/strongmarriages)

## PARENTING FOR LIFE CLASS R

We are called to teach our children diligently, but what does that look like? This class will explore the purpose, instruction, and discipline of parenting according to the Word of God.

**WHEN** 2018: Sundays from Jan. 14 - Feb. 25 | 8 a.m.

**WHERE** East Room

**QUESTIONS?** Kelly Alexander | [kalexander@yourchurch.com](mailto:kalexander@yourchurch.com)

**LEARN MORE & REGISTER** [yourchurch.com/parentingforlife](http://yourchurch.com/parentingforlife)

## PRE-MARITAL COUNSELING CLASS R

This class covers the basic foundations of biblical marriage including communication, roles of husbands and wives, and sexual intimacy in marriage. This class is required for all engaged couples getting married at College Park Church, and strongly encouraged for every engaged couple who calls College Park their home church. You do not have to be getting married at College Park to attend the class, and newly married couples are also invited to attend.

**WHEN** 2017: Sundays from Sept. 10 - Oct. 29 | 8 a.m. (fall)  
2018: Sundays from Jan. 14 - Feb. 25 | 8 a.m. (winter)

**WHERE** Chapel B **COST** \$50 per couple

**QUESTIONS?** Kelly Alexander | [kalexander@yourchurch.com](mailto:kalexander@yourchurch.com)

**LEARN MORE & REGISTER** [yourchurch.com/premaritalfall](http://yourchurch.com/premaritalfall)  
[yourchurch.com/premaritalwinter](http://yourchurch.com/premaritalwinter)

## BAPTISM ORIENTATION CLASS FOR PARENTS R

We believe that parents are directly and significantly involved in the spiritual life of their children. In this 90-minute class, we'll lead parents through a process designed to lay a biblical foundation to help your child understand the redeeming work of Christ, the assurance of salvation, how to pursue faithfulness to the Lord, and more.

**WHEN** [Choose One]

Sunday, Sept. 24, 2017 | 8 a.m.

Sunday, Jan. 21, 2018 | 8 a.m.

Wednesday, Jan. 24, 2018 | 6:30 p.m.

Sunday, June 17, 2018 | 8 a.m.

Sunday, June 24, 2018 | 8 a.m.

**WHERE** Room O|101

**QUESTIONS?** Hannah Booher | [hbooher@yourchurch.com](mailto:hbooher@yourchurch.com)

**LEARN MORE & REGISTER** [yourchurch.com/baptismorientation](http://yourchurch.com/baptismorientation)



## GOD OWNS IT ALL CLASS R

This class will teach you how to have a biblical perspective on the stewardship of your finances, time, and talents as you begin to understand that God is the ultimate Owner of everything you have.

**WHEN** Sundays from Sept. 17 - Oct. 29 | 9:45 a.m.

**WHERE** Room E|101

**QUESTIONS?** Rick Hampton | [rhampton@yourchurch.com](mailto:rhampton@yourchurch.com)

**LEARN MORE & REGISTER** [yourchurch.com/godownsitall](http://yourchurch.com/godownsitall)

## BIBLICAL COUNSELING TRAINING WEEKENDS R

These three weekends are designed to equip you to accurately handle the Word of God in your own life and in the lives of others. Topics include: marital issues, parenting issues, anger, depression, and a variety of other topics.

**WHEN** Discipleship Foundations | Feb. 16 - 17, 2018

Discipleship in Life Issues | Mar. 24 - 25, 2018

Discipleship in Relationships | Apr. 20 - 21, 2018

**WHERE** Chapel A

**QUESTIONS?** Kelly Alexander | [kalexander@yourchurch.com](mailto:kalexander@yourchurch.com)

**LEARN MORE & REGISTER** [yourchurch.com/foundations](http://yourchurch.com/foundations)  
[yourchurch.com/life](http://yourchurch.com/life)  
[yourchurch.com/relationships](http://yourchurch.com/relationships)

# GROW

## GROUPS

### MOM'S CONNECTION R

Mom's Connection is designed to encourage mothers as they grow in their understanding of the type of mother God has created them to be. Two different groups meet in order to serve the needs of moms in different phases of life. Both groups enjoy brunch, a speaker, and time for fellowship and discussion. Child care is also available.

**STEP 1** (For mothers of infants and preschoolers)

**WHEN** Every other Thursday from Sept. 7 - May 17 | 9:30 - 11:30 a.m.

**WHERE** East Room A/B

**QUESTIONS?** Brittany Pittman | [mcstep1@yourchurch.com](mailto:mcstep1@yourchurch.com)

**LEARN MORE & REGISTER** [yourchurch.com/momsconnection](http://yourchurch.com/momsconnection)

**STEP 2** (For mothers who have at least one child in first grade or older)

**WHEN** Two Wednesdays a month from Sept. 6 - May 2 | 9:30 - 11:30 a.m.

**WHERE** East Room B

**QUESTIONS?** Jane Schuth | [jschuth@yourchurch.com](mailto:jschuth@yourchurch.com)

**LEARN MORE & REGISTER** [yourchurch.com/momsconnection](http://yourchurch.com/momsconnection)

### TITUS 2 WOMEN (T2W) R

Our Titus 2 women's discipleship groups are made up of two mature women who co-mentor 6-8 younger women in their walk with Christ. Groups meet once a month for a calendar year.

**INTERESTED IN BEING IN A GROUP?** Come to the informational meeting.

**WHEN** Saturday, Jan. 20, 2018 | 10 a.m.

**WHERE** East Room

**QUESTIONS?** Jane Schuth | [jschuth@yourchurch.com](mailto:jschuth@yourchurch.com)

**LEARN MORE & REGISTER** [yourchurch.com/titus2groups](http://yourchurch.com/titus2groups)



# GROW

## EVENTS

### WORSHIP-BASED PRAYER NIGHTS

Join us once a month for worship and prayer as we seek God together. These nights are a great way to grow in your prayer life as we use several different formats for prayer, interspersed with worship. Child care is available but you must register for it beforehand. Visit the event page online for the child care registration link.

**WHEN** Sundays | 6 p.m.

2017: Aug. 27, Sept. 24, Oct. 22, Nov. 12, Dec. 17

2018: Jan. 20, Feb. 25, Mar. 25, Apr. 22

**WHERE** Sanctuary

**LEARN MORE & REGISTER** [yourchurch.com/worshipbasedprayer](http://yourchurch.com/worshipbasedprayer)

### JOURNEY IN MISSIONS NIGHT

This monthly missions fellowship, led by Nate Irwin, Pastor of Global Outreach, is a great opportunity to learn about missions while you explore the call to go or think about how to send others.

**WHEN** Second Monday each month from September - May | 6 - 7:45 p.m.

**WHERE** Room S|110 (Worship Arts Room)

**QUESTIONS?** Ron Page | [rpage@yourchurch.com](mailto:rpage@yourchurch.com)

**LEARN MORE & REGISTER** [yourchurch.com/jimnight](http://yourchurch.com/jimnight)

## THINK|18: DEFENDING THE FAITH R

In 2018, our annual THINK conference is welcoming Dr. Ravi Zacharias, along with his team, to discuss methods for defending the faith and evangelism. This weekend promises to help you grow in carrying out our mission of igniting a passion to follow Jesus.

**WHEN** Mar. 2 - 3, 2018

**WHERE** Sanctuary

**QUESTIONS?** Kelly Alexander | [kalexander@yourchurch.com](mailto:kalexander@yourchurch.com)

**LEARN MORE & REGISTER** [yourchurch.com/think](http://yourchurch.com/think)

## MARRIAGE DESSERT NIGHT R

### SEEING FRUIT IN YOUR IN-LAW RELATIONSHIPS

How do you love and serve your in-laws? How do you leave and cleave, but still allow your in-laws a place in your marriage and family? Come learn about what the Bible has to say about how to navigate these issues. Free child care is available for this event.

**WHEN** Tuesday, Sept. 26 | 7 - 8:45 p.m.

**WHERE** College Park Ministry Center

**QUESTIONS?** Gary Meeks | [gmeeks@yourchurch.com](mailto:gmeeks@yourchurch.com)

**LEARN MORE & REGISTER** [yourchurch.com/marriagedessert](http://yourchurch.com/marriagedessert)

## FOUNDATIONS IN PARENTING SEMINAR R

This class is designed to prepare parents for dedicating their children at College Park Church. Discussion focuses on understanding the meaning of dedication, the promises being made by the parents, and the commitment of the church to join with parents as we pursue the joy of the next generation together.

**WHEN** 2017: Saturday, Sept. 23 | 8:45 a.m. - noon  
2018: Saturday, Feb. 10 | 8:45 a.m. - noon  
Saturday, Apr. 28 | 8:45 a.m. - noon

**WHERE** Room C|201 & C|203

**QUESTIONS?** Courtney Worl | [cworl@yourchurch.com](mailto:cworl@yourchurch.com)

**LEARN MORE & REGISTER** [yourchurch.com/foundationsinparenting](http://yourchurch.com/foundationsinparenting)



# GROW

## TRINITY EXTENSION CAMPUS

College Park Church hosts an extension site for Trinity Evangelical Divinity School (TEDS) located in Deerfield, Illinois. Students can earn a Master of Arts in Christian Studies or a Certificate in Biblical Studies. TEDS provides the professors, many of whom teach at the Chicago campus. Classes are on Friday evenings and all day Saturdays—each class generally meets four times per semester.

**WHEN** Fridays: 6 - 9 p.m. | Saturdays, 9 a.m. - 5 p.m. beginning Aug. 24

**WHERE** Room O|101

**LEARN MORE & REGISTER** [yourchurch.com/trinityextension](http://yourchurch.com/trinityextension)

## DIGITAL RESOURCES

### THEOLOGY BASICS VIDEO SERIES

This four-part video series covers the basic elements of Christianity. Each video is 12-15 minutes long and is followed by discussion.

**HOW DID IT ALL GET STARTED** (Creation)

**WHAT WENT WRONG?** (The Fall)

**WHAT IS THE SOLUTION TO SIN IN THE WORLD?** (Redemption)

**HOW IS IT GOING TO END?** (Restoration)

**WATCH THE VIDEOS** [yourchurch.com/theologybasics](http://yourchurch.com/theologybasics)

**DISCIPLESHIP RESOURCES** | [yourchurch.com/discipleship](http://yourchurch.com/discipleship)

**FAMILY RESOURCES** | [yourchurch.com/familyresources](http://yourchurch.com/familyresources)

**SMALL GROUP RESOURCES** | [yourchurch.com/smallgroupresources](http://yourchurch.com/smallgroupresources)



# MULTIPLY

Igniting a passion to follow Jesus requires action! To be on mission means that we are actively taking part in making disciples. There are many ways to multiply:

*Raising up the next generation of Christ-followers by discipling children*

*Sharing the gospel near and far*

*Being part of a discipleship relationship*

*Serving at College Park or through our ministry partners*

*Helping launch a new campus, church plant, or taking the gospel to the world*

These are just a few ways you can multiply your life in the lives of others—the possibilities are endless.



# MULTIPLY

## EVENTS

### REACH|17

REACH is our annual conference focused on global missions. We'll have a guest speaker for a Sunday service, hear from Nate Irwin, our Pastor of Global Outreach, get updates from our featured missionaries, and think about how to best engage with taking the gospel to the nations. There will be several events over the course of the week, so be sure to check out the website for a full list of what's happening.

**WHEN** Oct. 22 - 29, 2017

**QUESTIONS?** Ron Page | [rpage@yourchurch.com](mailto:rpage@yourchurch.com)

**LEARN MORE & REGISTER** [yourchurch.com/reach](http://yourchurch.com/reach)

### VISION TRIPS

Taking a trip to experience the sights, sounds, and smells of one of our global strategic partners is the best way to get a real vision for global outreach. We have trips in almost every season of the year. Visit the website for a list of current trips.

**QUESTIONS?** Ron Page | [rpage@yourchurch.com](mailto:rpage@yourchurch.com)

**LEARN MORE & REGISTER** [yourchurch.com/visiontrips](http://yourchurch.com/visiontrips)

### FIRST FRIDAY PRAYER

Join us for an evening of fellowship over dinner as we learn about and pray for College Park missionaries and their families. Child care is available, but families must register for it beforehand. Visit the event online for the child care registration link.

**WHEN** First Friday of each month | 6 - 7:45 p.m.

**WHERE** College Park Ministry Center

**QUESTIONS?** Ron Page | [rpage@yourchurch.com](mailto:rpage@yourchurch.com)

**LEARN MORE & REGISTER** [yourchurch.com/firstfriday](http://yourchurch.com/firstfriday)

## TITUS 2 WOMEN (T2W)

Our Titus 2 women's discipleship groups are made up of two mature women who co-mentor 6-8 younger women in their walk with Christ. Groups meet once a month for a calendar year.

**MENTOR INTEREST TRAINING MEETING** (for mature women)

**WHEN** Saturday, Oct. 7 | 9 a.m.

**WHERE** East Room

**QUESTIONS?** Jane Schuth | [jschuth@yourchurch.com](mailto:jschuth@yourchurch.com)

**LEARN MORE & REGISTER** [yourchurch.com/titus2mentor](http://yourchurch.com/titus2mentor)

## WOMEN NEXT DOOR

Women Next Door is a group of women of College Park who want to intentionally connect with their neighbors by opening their homes for neighborhood Bible studies.

**INTERESTED IN STARTING A STUDY?**

Ginger Johnson | [womennextdoor@yourchurch.com](mailto:womennextdoor@yourchurch.com)

## WOMEN'S SUMMER GATHERING

This is an all-church women's event designed to give women an opportunity to enjoy a night out, bring friends, and connect with other women in our community.

**WHEN** Tuesday, Aug. 29 | 6:45 - 8:15 p.m.

**WHERE** College Park Ministry Center

**QUESTIONS?** Jane Schuth | [jschuth@yourchurch.com](mailto:jschuth@yourchurch.com)

**LEARN MORE** [yourchurch.com/summergathering](http://yourchurch.com/summergathering)

## WOMEN'S BLESSINGS MARKET

The Blessings Market is an exciting and unique event with several local vendors from whom women can purchase handmade goods. A portion of proceeds from the evening benefit ministry partners in our own community and around the world.

**WHEN** Tuesday, Nov. 14 | 6:30 - 8:30 p.m.

**WHERE** Atrium/Commons

**QUESTIONS?** Jane Schuth | [jschuth@yourchurch.com](mailto:jschuth@yourchurch.com)

**LEARN MORE** [yourchurch.com/ blessingsmarket](http://yourchurch.com/ blessingsmarket)

# MULTIPLY

## SERVE

### DISCIPLESHIP OF THE NEXT GENERATION

What better way to multiply your life than by investing in the discipleship of the next generation? Each fall, it takes over 400 people to fill a variety of roles – from greeters and teachers to caregivers and Small Group leaders – to fuel these ministries. Will you consider joining these strategic ministries?

**QUESTIONS?** Children: Hannah Booher | [hbooher@yourchurch.com](mailto:hbooher@yourchurch.com)  
Students: Natalie Eberhard | [neberhard@yourchurch.com](mailto:neberhard@yourchurch.com)

**LEARN MORE & REGISTER** [yourchurch.com/nextgen](http://yourchurch.com/nextgen)

### SERVE & USE YOUR GIFTS AT COLLEGE PARK

There are lots of ways you can plug into serving through various ministries at College Park. Visit our church website to see opportunities in each ministry or search by your interests. You'll fill out an interest form and someone from that specific ministry will get in touch with you.

**LEARN MORE & REGISTER** [yourchurch.com/useyourgifts](http://yourchurch.com/useyourgifts)

### BE A SMALL GROUP LEADER

We are always looking for qualified, spiritually mature Christ-followers who want to lead a Small Group and help others go deeper with Jesus. If you're interested in leading a group or in learning more about leadership, please plan on attending an orientation session, as it is required for all potential leaders.

**WHEN** 2017: Saturday, Sept. 16 | 8:30 a.m - 2 p.m.  
2018: Saturday, Jan. 13, Mar. 17, June 9, & Sept. 8 | 8:30 a.m - 2 p.m.

**WHERE** East Room

**QUESTIONS?** Karesse Faull | [kfaull@yourchurch.com](mailto:kfaull@yourchurch.com)

**LEARN MORE & REGISTER** [yourchurch.com/leaderorientation](http://yourchurch.com/leaderorientation)

# MULTIPLY

## LOCAL OUTREACH

We want multiplication at College Park to happen inside our doors and beyond them. As you think about your next step, consider how sharing the gospel with unbelievers can help you grow and multiply. We believe that the best multiplication happens when the people of God intentionally reach out to people in their sphere of influence with the gospel. Here are a few ways you can be intentional.

### NEIGHBORING

We use this term to describe how to engage with our neighbors. We have three goals in mind:

1. **CONNECT** intentionally with your neighbors, co-workers, friends, and people you encounter.
2. **LOVE** your neighbors with words and deeds.
3. **BUILD** bridges of grace that will sustain the weight of gospel truth.

### INVITE SOMEONE TO A SUNDAY SERVICE

We plan each service with your neighboring efforts in mind, and strive to provide you with an opportunity to practice multiplication every week as you share the gospel with your neighbors and then invite them to come and see the gospel being lived out in the body of Christ.

### EVENTS & ACTIVITIES

As you do the work of reaching out to the people around you, we want to provide spaces for them to engage with the gospel. To help that effort, we have a number of events and activities throughout the year designed for you to intentionally invite your neighbors. Things like Summer Fest, our annual Christmas concert, our annual Easter services, and Women's Gatherings are great events to which you can invite people.

# OTHER MINISTRIES

## COMPASSION

### LEGACY BUILDERS

Legacy Builders is a community for those age 55 and over, focused on spiritual encouragement and service. The group is made up of retired or semi-retired, singles, couples, and those who have been widowed. There are events throughout the year focused on building community, encouraging one another, and serving others.

**QUESTIONS?** Karen Davis | [legacybuilders@yourchurch.com](mailto:legacybuilders@yourchurch.com)

**LEARN MORE** [yourchurch.com/legacybuilders](http://yourchurch.com/legacybuilders)

### DEAF CHURCH MINISTRY

Christian Life Church of the Deaf (CLCD) uses American Sign Language (ASL) to present the gospel to the Indianapolis area Deaf Community. Presenting the gospel in ASL allows for a natural first-language experience for the under-reached Deaf Community.

**WHEN** Sundays at 9:45 & 11:30 a.m. | Wednesdays at 6:30 p.m.

**WHERE** College Park Ministry Center

**QUESTIONS?** Tony Myers | [deafchurch@yourchurch.com](mailto:deafchurch@yourchurch.com)

**LEARN MORE** [yourchurch.com/deafchurch](http://yourchurch.com/deafchurch)

## ADULT SPECIAL NEEDS MINISTRY

This vibrant ministry provides Bible study, transportation, friendship, and community to those in our church body with physical limitations.

**WHEN** Sundays at 9:45 a.m. | Mondays during the school year at 7 p.m.

**QUESTIONS?** Jeff Alexovich | [adultspecialneeds@yourchurch.com](mailto:adultspecialneeds@yourchurch.com)

**LEARN MORE** [yourchurch.com/adultspecialneeds](http://yourchurch.com/adultspecialneeds)

## WIDOWS MINISTRY

Our Widows Ministry exists to help widows find purpose in the journey of grief. The ladies meet monthly to provide community, offer support and resources, foster hope in the face of grief, and encourage the fulfillment of God's plan for this unique phase of life.

**WHEN** Second Tuesdays, Noon - 2 p.m. | Commons and Prayer Room B  
Third Sundays, 3:30 - 4 p.m. | Off-site location

**QUESTIONS?** Alma Walker | [widowsministry@yourchurch.com](mailto:widowsministry@yourchurch.com)

**LEARN MORE** [yourchurch.com/widows](http://yourchurch.com/widows)

# OTHER MINISTRIES

## WORSHIP ARTS

### CHOIR

The 80+ voices of the Spirit & Truth Choir lead our congregation in worship through a variety of choral music styles. In addition to singing a couple of times a month in Sunday morning worship services, the choir presents seasonal worship events throughout the year with our orchestra, dance ministry, drama ministry, and other Worship Arts Ministries.

**QUESTIONS?** Tracie Pletcher | [tpletcher@yourchurch.com](mailto:tpletcher@yourchurch.com)

### CHILDREN'S CHOIR

The New Creation Choir is a ministry for children age 6 through 6th grade with a mission to ignite children's passion to use their gifts in worship. It offers great opportunities for children to memorize Scripture through song, and learn about worship as they participate in services throughout the year.

**QUESTIONS?** Nancy Awabdy | [newcreationchoir@yourchurch.com](mailto:newcreationchoir@yourchurch.com)

### DANCE

In Step, the dance ministry of College Park Church, is for females age five to adult, who use their creative gifts during various corporate worship services, musicals, and other worship venues. The dance ministry consists of dancers, teachers, choreographers, costume designers, and seamstresses.

**QUESTIONS?** Bethany Gee | [danceministry@yourchurch.com](mailto:danceministry@yourchurch.com)



## ORCHESTRA

The College Park Church Orchestra is a group of individuals gifted in playing musical instruments with a desire is to come together as a Spirit-led group to skillfully worship the Lord with instrumental music. The orchestra helps lead all of the assembled believers into deeper worship of Jesus Christ.

**QUESTIONS?** Tracie Pletcher | [tpletcher@yourchurch.com](mailto:tpletcher@yourchurch.com)

## PRAISE BAND

The Praise Band regularly leads Sunday morning worship and other special events throughout the year. The group consists of some variation of guitars, bass, drums, keyboards, piano, auxiliary percussion, and various solo instruments.

**QUESTIONS?** Tracie Pletcher | [tpletcher@yourchurch.com](mailto:tpletcher@yourchurch.com)

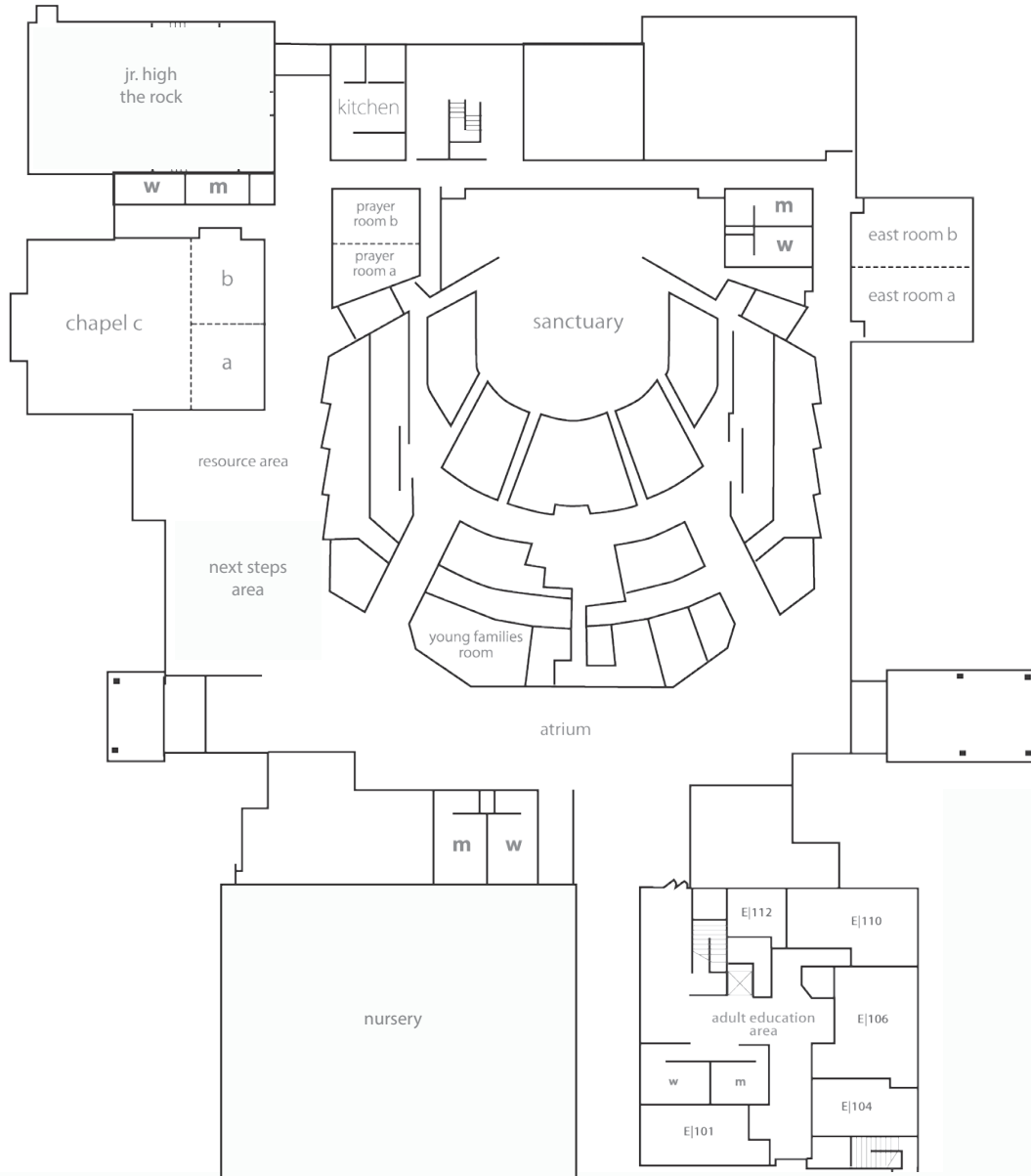
## TECH SERVE

We strive for excellence in the use of production arts to glorify God and to insure that people see and hear the components that reinforce the message being delivered. From sound and lighting to video production and computer graphics, this crew works hard behind the scene to keep everything running smoothly. Opportunities to serve include: Video Switcher, Camera Operators, Computer Graphics, Audio, and Staging & Setup.

**QUESTIONS?** Chris Skinner | [cskinner@yourchurch.com](mailto:cskinner@yourchurch.com)

**LEARN MORE** [yourchurch.com/techserve](http://yourchurch.com/techserve)

# FINDING YOUR WAY AROUND THE NORTH INDY CAMPUS





**office hours**

Mon - Fri : 8:30 - 5 p.m.

**office phone**

317.875.0282

**office fax**

317.875.0605

**questions via email**

office@yourchurch.com

**address**

2606 west 96th street  
indianapolis, in 46268



**LEARN MORE**  
yourchurch.com



**Facebook**  
CollegeParkIndy



**Twitter**  
@collegeparkindy



**Instagram**  
@collegeparkindy